

## OPIS PRODUKTU

- Możliwość dopasowania kąta między profilami
- Prosty montaż
- Dobra stabilizacja połączeń profili
- Możliwość budowania opraw o wielokątnych kształtach

Wypełnij puste pola

Nr produktu

Typ oprawy

Firma

Projekt

Data



## SPECYFIKACJA TECHNICZNA

### Przeznaczenie produktu

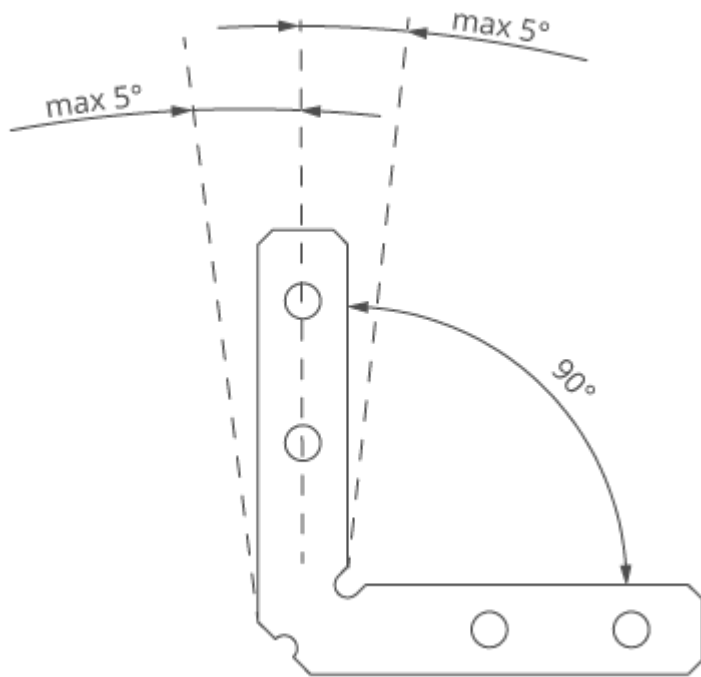
- do łączenia prostego i kąтового profili KLUŚ wyposażonych w „zamek mały” oraz do stabilizowania końców profili montowanych w ciągi

### Montaż

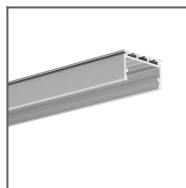
- za pomocą wkrętów dociskowych

### Dodatkowe informacje

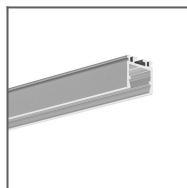
- blacha nierdzewna, grubość 1,5 mm
- jeżeli kąt między łączonymi oprawami jest inny niż nominalny, możemy dogiąć go do żądanej wartości o 5 stopni na stronę



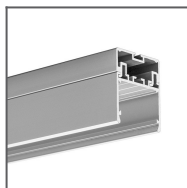
**PROFILE POWIĄZANE**



Profil GIZA-LL  
Ref: C0758



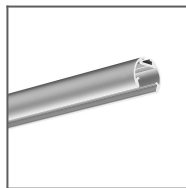
Profil OPK-4  
Ref: C0370



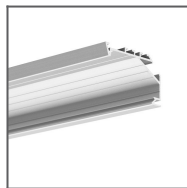
Profil 3035  
Ref: 18039



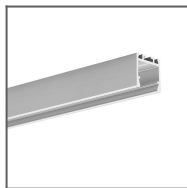
Profil JAZ  
Ref: B8547



Profil OLEK  
Ref: B8505



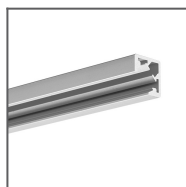
Profil KOPRO-30  
Ref: B7890



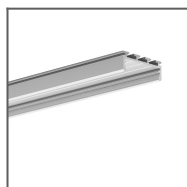
Profil PDS-ZM  
Ref: B7696



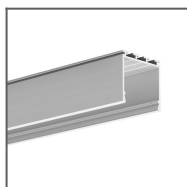
Profil GLAD-45  
Ref: B7009



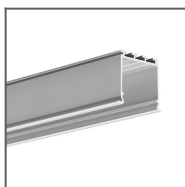
Profil KUBIK-45  
Ref: B7697



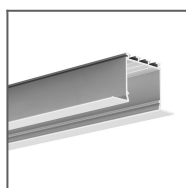
Profil GIZA  
Ref: B5556



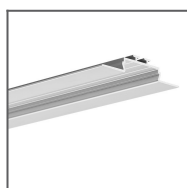
Profil LIPOD  
Ref: B5554



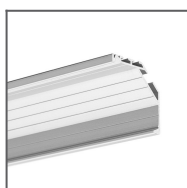
Profil LOKOM  
Ref: B5553



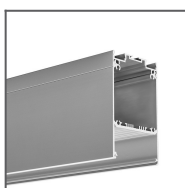
Profil LARKO  
Ref: B5552



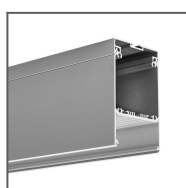
Profil OPAC-30  
Ref: B6164



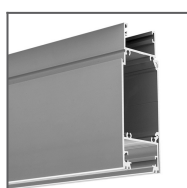
Profil KOPRO  
Ref: B6367



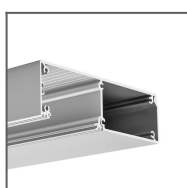
Profil DES  
Ref: 18030



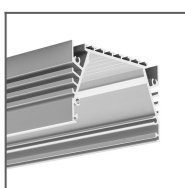
Profil GLADES  
Ref: 18036



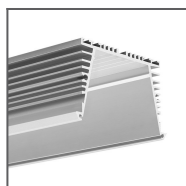
Profil KIDES-DUO  
Ref: 18032



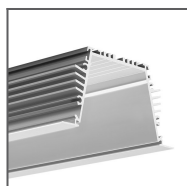
Profil KIDES  
Ref: 18031



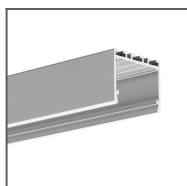
Profil SEPOD  
Ref: B6593



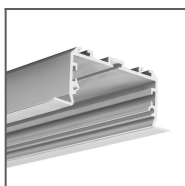
Profil SEKOMA  
Ref: B6595



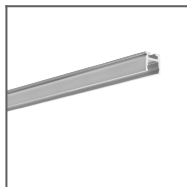
Profil SEKODU  
Ref: B6597



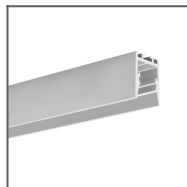
Profil 3035-O  
Ref: B8441



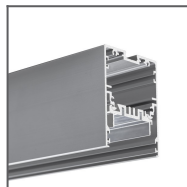
Profil LARKO-50  
Ref: C0756



Profil PIKO-ZM  
Ref: C1168



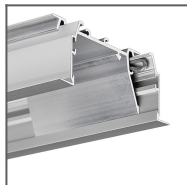
Profil PDS-ZMG  
Ref: C1418



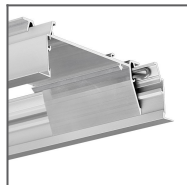
Profil MOD-50  
Ref: 18047



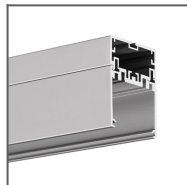
Profil PDS-ZM-PLUS  
Ref: C2056



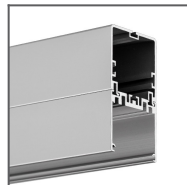
Profil RAM-KOL-50  
Ref: 18060



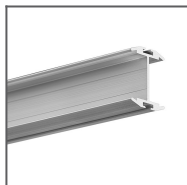
Profil RAM-KOL-100  
Ref: 18062



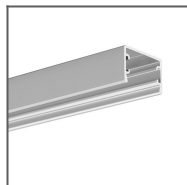
Profil 4050  
Ref: 18050



Profil 4050-W  
Ref: 18051



Profil GIZA-DUO-LL  
Ref: C2162



Profil GLAZA-LL  
Ref: C2627