

## OPIS PRODUKTU

- Prosty montaż
- Dobra stabilizacja połączeń profili
- Możliwość budowania opraw o wielokątnych kształtach

Wypełnij puste pola

Nr produktu

Typ oprawy

Firma

Projekt

Data



## SPECYFIKACJA TECHNICZNA

### Przeznaczenie produktu

- do łączenia prostego i kątownego profili KLUŚ wyposażonych w „zamek mały” oraz do stabilizowania końców profili montowanych w ciągi
- możliwość tworzenia kształtek typu T, X, Y z profili wyposażonych w 3 gniazda ZM

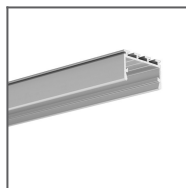
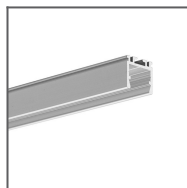
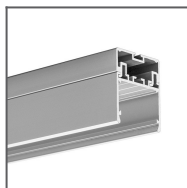
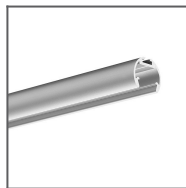
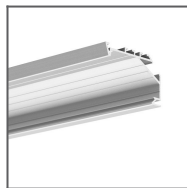
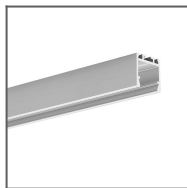
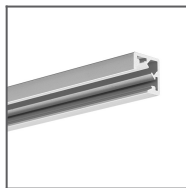
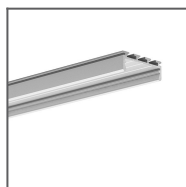
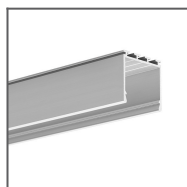
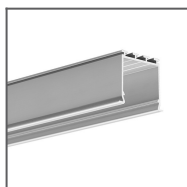
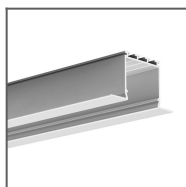
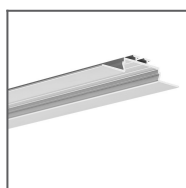
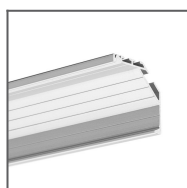
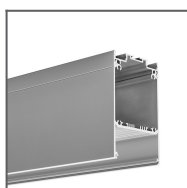
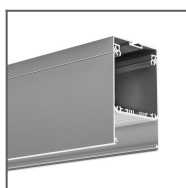
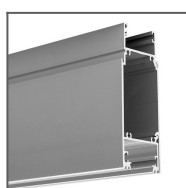
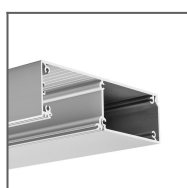
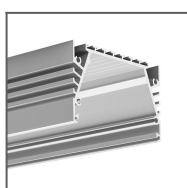
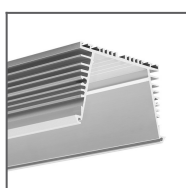
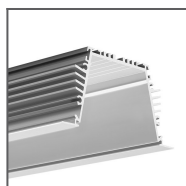
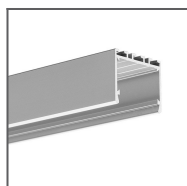
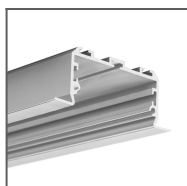
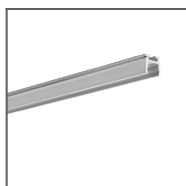
### Montaż

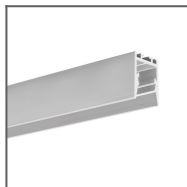
- za pomocą wkrętów dociskowych

### Dodatkowe informacje

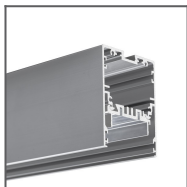
- blacha nierdzewna, grubość 1,5 mm

## PROFILE POWIĄZANE

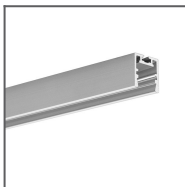
Profil GIZA-LL  
Ref: C0758Profil OPK-4  
Ref: C0370Profil 3035  
Ref: 18039Profil JAZ  
Ref: B8547Profil OLEK  
Ref: B8505Profil KOPRO-30  
Ref: B7890Profil PDS-ZM  
Ref: B7696Profil KUBIK-45  
Ref: B7697Profil GIZA  
Ref: B5556Profil LIPOD  
Ref: B5554Profil LOKOM  
Ref: B5553Profil LARKO  
Ref: B5552Profil OPAC-30  
Ref: B6164Profil KOPRO  
Ref: B6367Profil DES  
Ref: 18030Profil GLADES  
Ref: 18036Profil KIDES-DUO  
Ref: 18032Profil KIDES  
Ref: 18031Profil SEPOD  
Ref: B6593Profil SEKOMA  
Ref: B6595Profil SEKODU  
Ref: B6597Profil 3035-O  
Ref: B8441Profil LARKO-50  
Ref: C0756Profil PIKO-ZM  
Ref: C1168



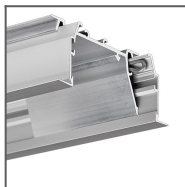
Profil PDS-ZMG  
Ref: C1418



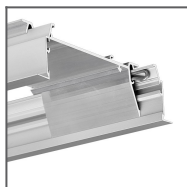
Profil MOD-50  
Ref: 18047



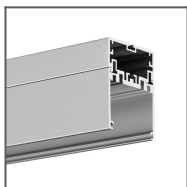
Profil PDS-ZM-PLUS  
Ref: C2056



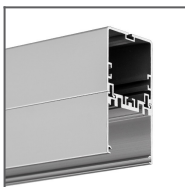
Profil RAM-KOL-50  
Ref: 18060



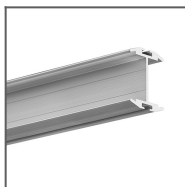
Profil RAM-KOL-100  
Ref: 18062



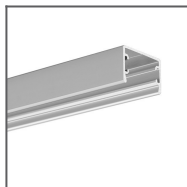
Profil 4050  
Ref: 18050



Profil 4050-W  
Ref: 18051



Profil GIZA-DUO-LL  
Ref: C2162



Profil GLAZA-LL  
Ref: C2627