

OPIS PRODUKTU

- Prosty montaż
- Dobra stabilizacja połączeń profili
- Możliwość budowania opraw o wielokątnych kształtach

Wypełnij puste pola

Nr produktu

Typ oprawy

Firma

Projekt

Data



SPECYFIKACJA TECHNICZNA

Przeznaczenie produktu

- do łączenia prostego i kąowego profili KLUŚ wyposażonych w „zamek mały” oraz do stabilizowania końców profili montowanych w ciągi
- możliwość tworzenia kształtek typu T, X, Y z profili wyposażonych w 3 gniazda ZM

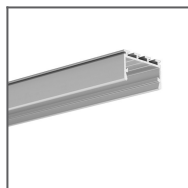
Montaż

- za pomocą wkrętów dociskowych

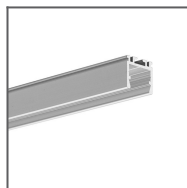
Dodatkowe informacje

- blacha nierdzewna, grubość 1,5 mm

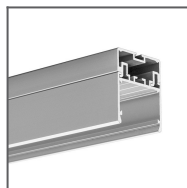
PROFILE POWIĄZANE



Profil GIZA-LL
Ref: C0758



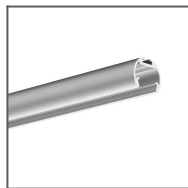
Profil OPK-4
Ref: C0370



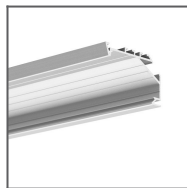
Profil 3035
Ref: 18039



Profil JAZ
Ref: B8547



Profil OLEK
Ref: B8505



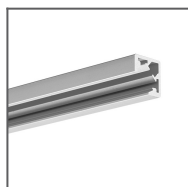
Profil KOPRO-30
Ref: B7890



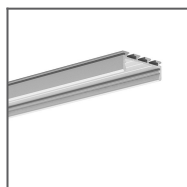
Profil PDS-ZM
Ref: B7696



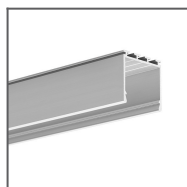
Profil GLAD-45
Ref: B7009



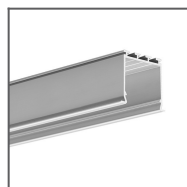
Profil KUBIK-45
Ref: B7697



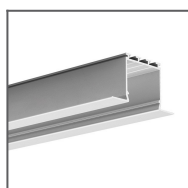
Profil GIZA
Ref: B5556



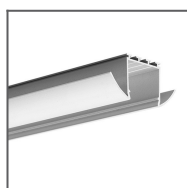
Profil LIPOD
Ref: B5554



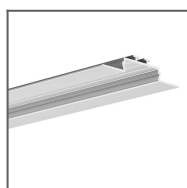
Profil LOKOM
Ref: B5553



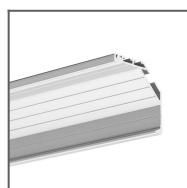
Profil LARKO
Ref: B5552



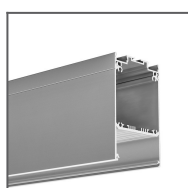
Profil LESTO
Ref: B5551



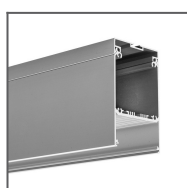
Profil OPAC-30
Ref: B6164



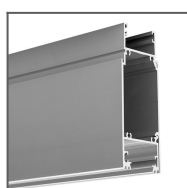
Profil KOPRO
Ref: B6367



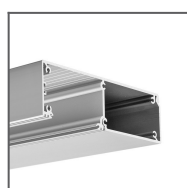
Profil DES
Ref: 18030



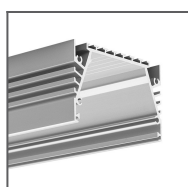
Profil GLADES
Ref: 18036



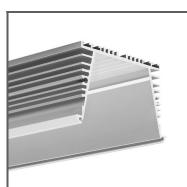
Profil KIDES-DUO
Ref: 18032



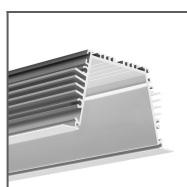
Profil KIDES
Ref: 18031



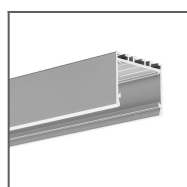
Profil SEPOD
Ref: B6593



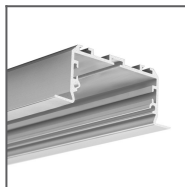
Profil SEKOMA
Ref: B6595



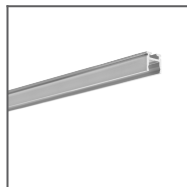
Profil SEKODU
Ref: B6597



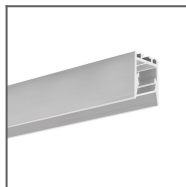
Profil 3035-O
Ref: B8441



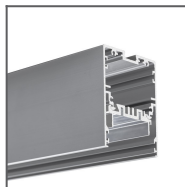
Profil LARKO-50
Ref: C0756



Profil PIKO-ZM
Ref: C1168



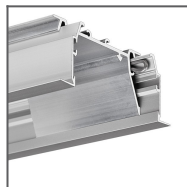
Profil PDS-ZMG
Ref: C1418



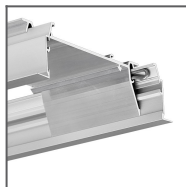
Profil MOD-50
Ref: 18047



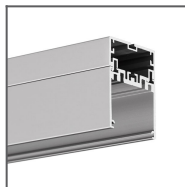
Profil PDS-ZM-PLUS
Ref: C2056



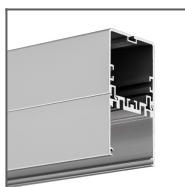
Profil RAM-KOL-50
Ref: 18060



Profil RAM-KOL-100
Ref: 18062



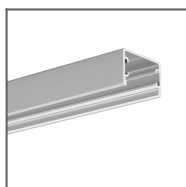
Profil 4050
Ref: 18050



Profil 4050-W
Ref: 18051



Profil GIZA-DUO-LL
Ref: C2162



Profil GLAZA-LL
Ref: C2627